



### KEY BENEFITS

- **Actionable Insights:** Leverage 12 months of rich data to understand 5G adoption trends and guide strategic decisions
- **Seamless Continuity:** Ensure uninterrupted service across LTE and 5G networks for superior customer experiences
- **Optimized Investments:** Prioritize spending and maximize ROI with data-driven capacity planning

### TRACK, UNDERSTAND, AND ACCELERATE YOUR 5G ROLLOUT STRATEGY

**The transition to 5G represents a pivotal moment for service providers. The complexities of managing 4G, 5G Non-Standalone (NSA), and 5G Standalone (SA) networks, alongside existing 4G devices, require comprehensive visibility and precise planning.**

AppLogic Networks' 5G Adoption Analysis empowers service providers to measure adoption rates, track subscriber transitions, and ensure seamless service continuity. The solution provides actionable insights to optimize 5G investments, prioritize spending, and develop subscriber-centric plans.

### FEATURES, FUNCTIONALITY AND CAPABILITIES

5G Adoption Analysis delivers robust analytics and capabilities, empowering service providers with:

- **Comprehensive Adoption Tracking:** Differentiate 4G, 5G NSA, and 5G SA – connected subscribers, devices, and volume trends to monitor the adoption journey effectively.
- **Multi-Layered Visibility:** Offers insights across subscriber behavior, device penetration, application usage, and service quality metrics to guide investments.
- **Location Heat Maps:** Visualizes subscriber density, traffic volume, and network coverage across 4G and 5G locations, identifying coverage gaps and network hotspots.
- **Rich Historical Data:** Tracks adoption trends over the past 7 days and 12 months, enabling data-driven decisions.
- **Intuitive Dashboards:** Provides multi-page views to analyze KPIs such as latency, packet loss, application usage, and device trends for each access type.
- **Vendor-Agnostic Deployment:** Supports LTE/4G, 5G NSA, and 5G SA networks seamlessly, ensuring compatibility across architectures.

Figure 1

5G adoption view in the ANI Portal

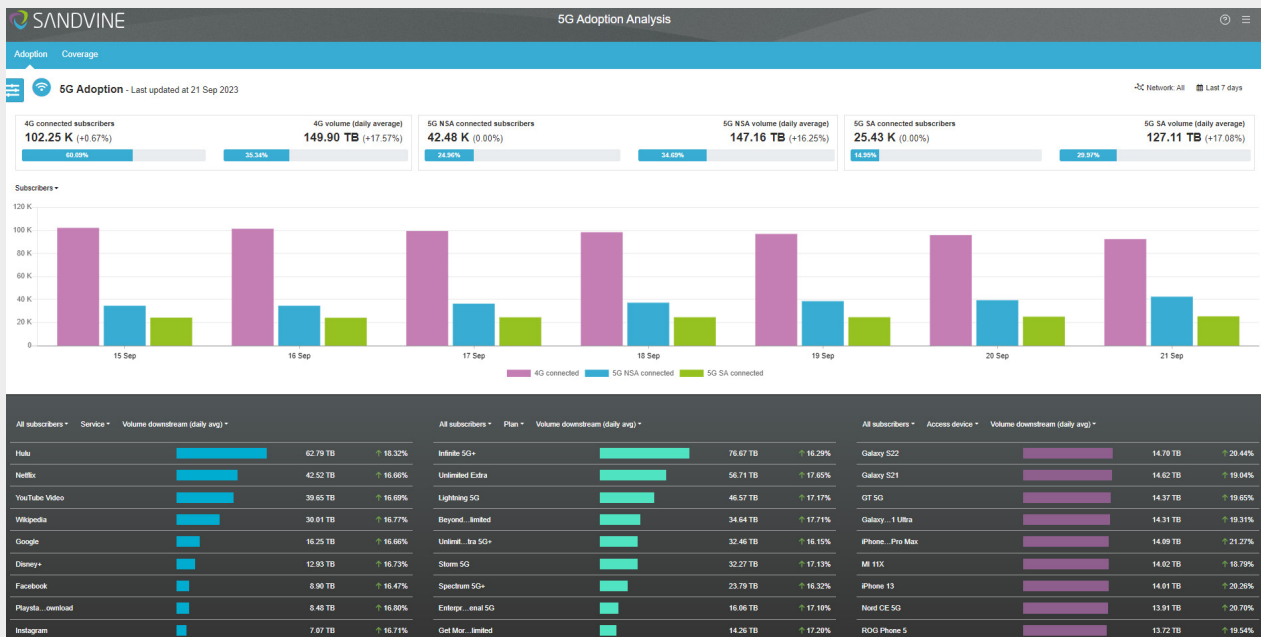
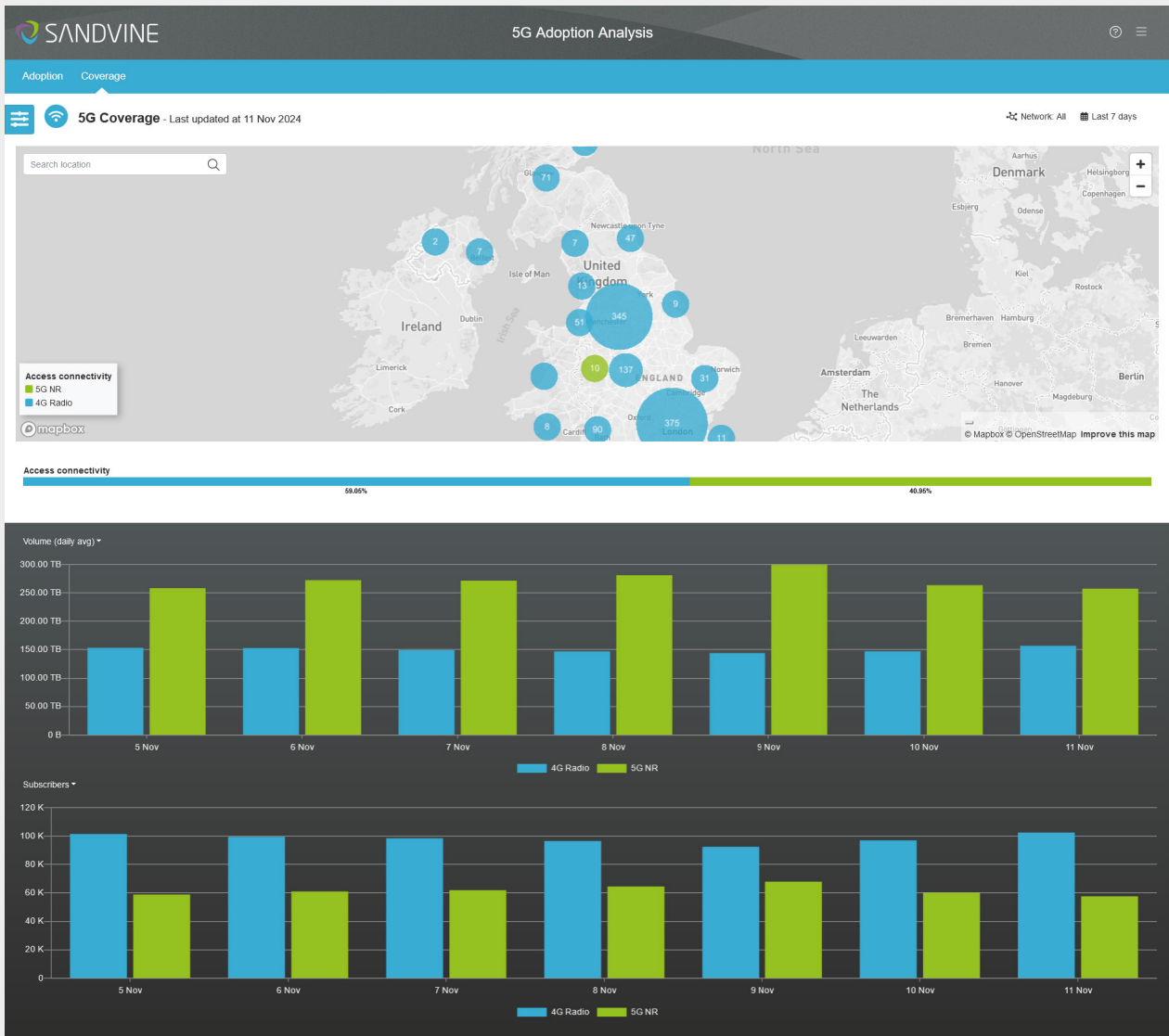


Figure 2

5G adoption coverage



HOW 5G ADOPTION ANALYSIS IS PACKAGED

AppLogic Networks offers three Packages; Analyze, Optimize and Monetize:

<b>ANALYZE</b>	<b>OPTIMIZE</b>	<b>MONETIZE</b>
Gain Insights to Drive Decisions	Maximize Efficiency and Improve Spending	Unlock Revenue Potential

5G Adoption Analysis is part of AppLogic Networks' Analyze Package and integrates seamlessly with other offerings, including:

- Video QoE Analysis
- Operations Insights








Together, these solutions provide a comprehensive approach to understanding network activity, subscriber behavior, and service quality, enabling strategic decision-making.

**HOW 5G ADOPTION ANALYSIS FUNCTIONS IN APPLOGIC'S FUNCTIONAL ARCHITECTURE**

The solution fits across AppLogics' core architecture layers, ensuring seamless integration and optimal functionality:

Figure 3

How 5G Adoption Analysis leverages AppLogic Networks' Functional Architecture

Value Delivery	AI/Big Data Use Cases	Dashboards & Workflows	VAS/BI Services	Managed Services			
Data Enrichment	Data Orchestration & Export						
	Data Contextualization and Advanced KQIs (incl. QoE Scoring)						
Data Intelligence	Real-time control & data plane analysis	ML/AI driven application identification, classification and categorization		Granular KPI creation			
Deployment Options	Certified Server & Qualified Software Appliances, Virtual, and Cloud						
							

- **Deployment Options:** Variety of deployment options for 4G/5G mobile operators to deploy a single solution to understand the adoption of various mobile technologies, including 5G SA
- **Data Intelligence:** Real-time data collection for measuring the performance, usage, and adoption of multiple mobile technologies, including 4G, 5G NSA, and 5G SA in the network.
- **Data Enrichment:** Creation of advanced KQIs to measure true subscribers' sentiments while using 4G, 5G NSA, and SA technologies and highly contextualized multi-dimensional roll-ups for location-level details and data export.
- **Value Delivery:** Detailed view of 5G adoption rate including devices, QoE, application usage, plans compared to legacy technologies, customized reporting, and enablement of building advanced ML models for smart transition

**BENEFITS**

AppLogic Networks' 5G Adoption Analysis provides tangible benefits for service providers:

- **Strategic Investment Guidance:** Pinpoints when and where to expand 5G capacity and reallocate resources effectively.
- **Improved Service Continuity:** Ensures seamless transitions across LTE, 5G NSA, and 5G SA networks, maintaining high-quality application performance.
- **Enhanced Subscriber Insights:** Understand device penetration and subscriber behavior to tailor services to high-value customer segments.
- **Operational Efficiency:** Reduce time-to-resolution with proactive identification of network issues, minimizing churn and operational costs.
- **Revenue Growth:** Develop targeted 5G-specific service plans to attract and retain customers.

**KEY USE CASES**

5G Adoption Analysis supports critical business objectives:

- **Transition Monitoring:** Tracks the migration from 4G to 5G to ensure smooth service transitions.
- **Capacity Planning:** Leverages data-driven insights to prioritize network investments and infrastructure upgrades.
- **Customer Segmentations:** Identifies high-ARPU subscribers and tailors offerings to maximize value.

**KEY SOLUTION COMPONENTS**

AppLogic Networks’ use cases feature key software components, visualizations and tools, across each layer that enable each use case’s full value:

<b>Value Delivery</b>	Deep Insights
	3 <sup>rd</sup> party Data Lakes
<b>Data Enrichment</b>	Insights Data Storage
	App QoE Engine, ANI Score Engine, Maestro Policy Engine, Maestro Automation Engine, Maestro Security Engine
<b>Data Intelligence</b>	ActiveLogic, AppLogic, Intelligent Feeds
<b>Deployment Options</b>	iQ42100, iQ42300, iQ52600, iQ2080
	Dell PowerEdge XR-12, R760, VNF, CNF

**OUR COMMITMENT TO PROVIDING VISIBILITY**

Our industry-leading AppLogic core technology delivers deep visibility into network traffic, unlocking new opportunities across every department. Key features include:

- **Accurate Application Identification:** Over 95% coverage, including encrypted traffic, ensuring precise network insights.
- **Content Classification:** Granular categorization of applications and services to enhance decision-making.
- **QoE KPIs and Sentiment Analysis:** Provides critical metrics and behavioral insights to optimize user experience.

AppLogic’s capabilities empower operators with actionable insights, driving operational efficiency, customer satisfaction, and revenue growth.

[Contact us today](#) to learn how 5G Adoption Analysis can enhance your network capabilities.

Our Industry-leading **unique core technology**



Unlock New **Business Opportunitites**

Department	Business KPIs Improved
<b>Ops</b>	Operational Efficiency
<b>Planning</b>	Reduced CAPEX
<b>Performance</b>	Improved QoE
<b>Customer Care</b>	CSAT, Retention & ARPU Growth
<b>Marketing</b>	New Revenue Streams
<b>Big Data</b>	Enhanced Data Modeling
<b>Regulatory</b>	Compliance
<b>Security</b>	Rev Assurance & Fraud Prevention

**ABOUT APPLIC NETWORKS**

AppLogic Networks’ cloud-based App QoE portfolio helps customers deliver high quality, optimized experiences to consumers and enterprises. Customers use our solutions to analyze, optimize, and monetize application experiences using contextual machine learning-based insights and real-time actions. Market-leading classification of more than 95% of traffic across mobile and fixed networks by user, application, device, and location creates uniquely rich, real-time data that significantly enhances interactions between users and applications and drives revenues. For more information visit <https://www.applogicnetworks.com> or follow AppLogic Networks on X @AppLogic Networks.



**USA**  
5800 Granite Parkway  
Suite 170  
Plano, TX 75024  
USA

**EUROPE**  
Neptunigatan 1  
211 20, Malmö  
Skåne  
Sweden  
T. +46 340.48 38 00

**CANADA**  
410 Albert Street,  
Suite 201, Waterloo,  
Ontario N2L 3V3,  
Canada  
T. +1 519.880.2600

**ASIA**  
Arliga Ecoworld,  
Building-1, Ground Floor,  
East Wing Devarabeesanahalli,  
Bellandur, Outer Ring Road,  
Bangalore 560103, India  
T. +91 80677.43333

Copyright ©2025 AppLogic Networks Corporation. All rights reserved. Any unauthorized reproduction prohibited. All other trademarks are the property of their respective owners.

This documentation, including all documentation incorporated by reference herein such as documentation provided or made available on the AppLogic Networks website, are provided or made accessible "AS IS" and "AS AVAILABLE" and without condition, endorsement, guarantee, representation, or warranty of any kind by AppLogic Networks Corporation and its affiliated companies ("AppLogic Networks"), and AppLogic Networks assumes no responsibility for any typographical, technical, or other inaccuracies, errors, or omissions in this documentation. In order to protect AppLogic Networks proprietary and confidential information and/or trade secrets, this documentation may describe some aspects of AppLogic Networks technology in generalized terms. AppLogic Networks reserves the right to periodically change information that is contained in this documentation; however, AppLogic Networks makes no commitment to provide any such changes, updates, enhancements, or other additions to this documentation to you in a timely manner or at all.